
Pinal Partnership

Open Space Initiative Workshop

Workshop Breakout Group Summary

September 24th, 2010



Pinal Partnership Open Space Initiative

Goal:

To bring together a diverse and action-orientated group of public and private stakeholders willing to collaboratively prioritize, protect, and obtain open space for multiple uses throughout Pinal County.

Short-Term Objective (1-3 years):

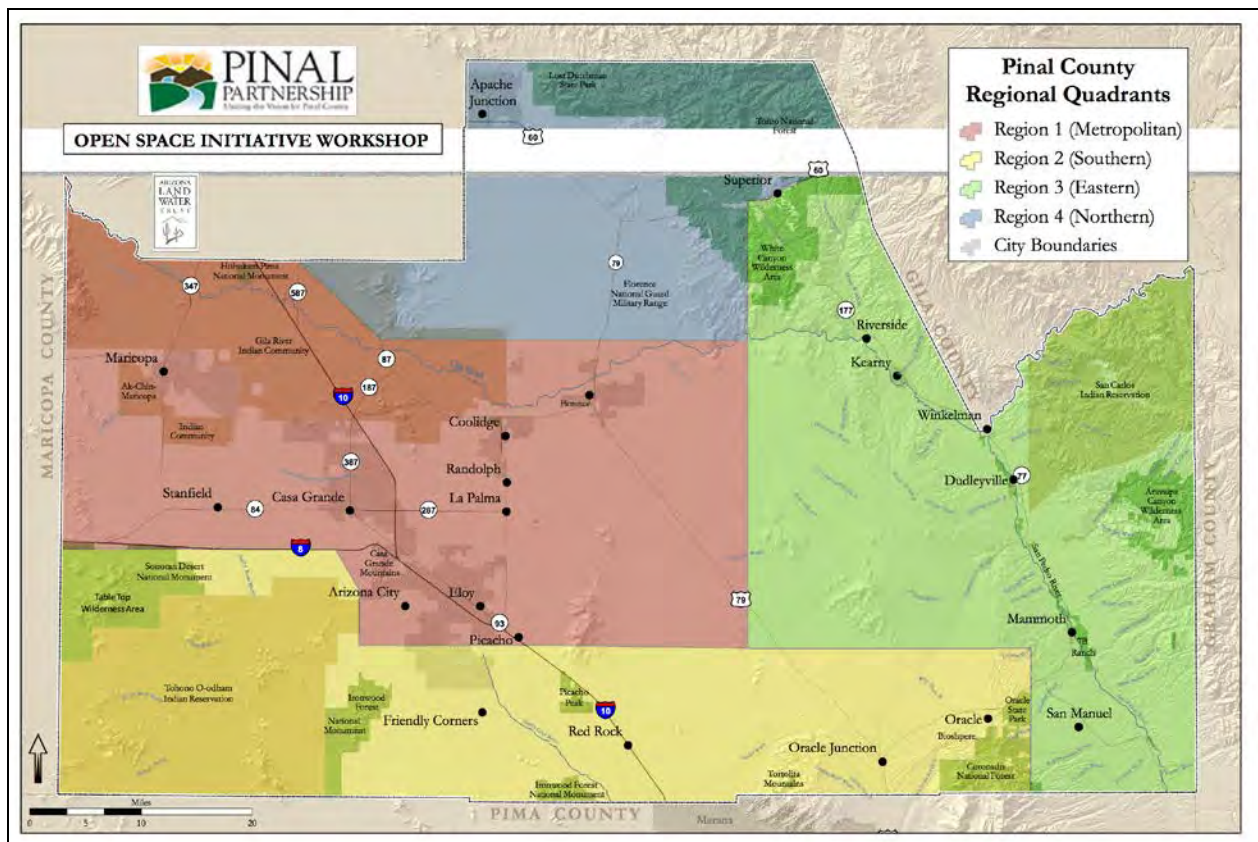
1. Formation of an action-oriented group(s) committed to implementing the Pinal County Open Space and Trails Master Plan, each with a dedicated leader, defined priorities, strategies, tasks, and timelines.
2. Create a mechanism to share information between groups, landowners, and land managers regarding their activities related to open spaces in Pinal County.
3. Begin to develop funding mechanisms.
4. Augment the Pinal Partnership Open Space Initiative founding team with workshop participants willing to actively and collaboratively develop open space conservation strategies.

Long-term Objectives (> 3 years):

Development of a Pinal County open space conservation “road map” that includes multi-year strategies, priorities, timelines, and measures of success.

“The Pinal Partnership is a coalition of community, business, educational and governmental leaders, whose goal is to provide leadership and support in specific areas of focus: improve research, planning and coordination of private and public efforts related to infrastructure, natural resources and community development in Pinal County. The Parks, Trails Open Space, Public Lands Committee of the Partnership organized this workshop to:

- Enhance participant awareness and support of the Pinal County Open Space and Trails Master Plan and the open space plans of other local governments and non-governmental organizations in Pinal County.
- Enhance participant understanding of the economic, biological, cultural and “quality of life” values of open space.
- Acquaint participants with a variety of “tools” available for implementing open space aspirations.
- Inspire participants to continue the collaboration of their efforts on open space issues, by either joining the Pinal Partnership Open Space Initiative or through participation with a new or existing action-oriented group.
- Have a forum in which to network, learn what others are doing, collaborate and organize into groups who will work toward securing open space in Pinal County.”



Pinal Partnership Open Space Initiative Workshop
September 24th, 2010
8:00 AM-4:00 PM
Central Arizona College, Coolidge AZ

On Friday, September 24, 2010 at Central Arizona College, over 120 people attended the “Pinal Partnership Open Space Initiative Workshop” organized by the Partnership’s Parks, Trails, Open Space and Public Lands Committee.

The purpose of this Workshop was to:

- Enhance participant awareness and support of the Pinal County Open Space and Trails Master Plan and the open space plans of other local governments and non-governmental organizations in Pinal County.
- Enhance participant understanding of the economic, biological, cultural and “quality of life” values of open space.
- Acquaint participants with a variety of “tools” available for implementing open space aspirations.

- Inspire participants to continue the collaboration of their efforts on open space issues, by either joining the Pinal Partnership Open Space Initiative or through participation with a new or existing action-oriented group.
- Have a forum in which to network, learn what others are doing, collaborate and organize into groups who will work toward securing open space in Pinal County.”

The workshop session was broken into four groups, or regions, and each participant was asked to choose one of the regions. Each regional discussion was facilitated with following prompters:

- Why is open space important to you?
- When considering the importance of preserving open space in Pinal County, what connections do you see between open space and quality of life? Economic Development? Drinking water supplies? Recreation? Educational/good health opportunities for youth?
- What are your highest priority areas of interest for open space in Pinal County and/or are you already involved in open space projects? How do these areas relate to the existing Pinal County Open Space & Trails Plan?
- From the success stories, you heard earlier today from the panel, what implementation tools you would like to explore further/learn more about for your open space interests?
- What can you contribute to the establishment of open space in Pinal County? Would you be interested in continuing to work on open space implementation in Pinal County by attending subsequent workshops? Would you or your organization be willing to explore partnerships/collaborations possibilities with Pinal County, beyond this workshop, to reach shared open space goals?
- Are you aware of other individuals or groups who are proponents of open space in Pinal County who are not present at this workshop today but may like to participate in subsequent workshops/meetings?

1. Why is open space important to you?

- To protect for future generations
- Cultural Heritage
- Air and water quality-Health Value: Mental and physical
- Protect the environment
- Preserve Arizona natural desert land
- Provides ecological corridors for animals and biological integrity
- Provides relief from constant extreme heat-Heat island mitigation
- Provides valuable resources
- Protects property values
- Protects agriculture and grazing
- Economic and tourism opportunities

- Provides meeting places for social activities
- Provides outdoor recreation diversity

2. When considering the importance of preserving open space in Pinal County, what connections do you see between open space and quality of life? Economic Development, Drinking water supplies, Recreation, Educational/good health opportunities for youth?

- Urban open space within urban core and suburban areas connected to natural areas to reduce mileage and gas consumption
- Regional Trails Systems between or among cities and towns
- Livable communities should have interconnected trail systems
- Not all open spaces are natural – Diverse multi-uses can be created, i.e. Tempe Town Lake
- Engage local communities to identify their values and life styles
- Community Stewardship Organization Model – every time a property sales transaction occurs, a percentage of the transaction fee goes to conservation or can be imbedded in deeds or can be voluntary via HOA and maybe mandatory by the county
- Eastern Pinal County Natural Open Space is very important and critical that the San Pedro River not to be impacted like the Santa Cruz River
- Engage Lower San Pedro Partnership Landowners (BHP, RCC, ASARCO, TNC, SRP, AGFD, BOFR)
- Marana Pima County Linkages need to match Plan efforts
- Adopt open space policy that discourages eastern Pinal County for routing

3. What are your highest priority areas of interest for open space in Pinal County and/or are you already involved in open space projects? How do these areas relate to the existing Open Space & Trails Plan?

- To identify and promote regional character specific to Pinal County – Sense of Place
- Efficient use of water, i.e. Community Gardens to be part of the agriculture areas
- Tourism -Develop Historic Railroad from Florence to Kearney
- Develop Regional Partnerships to build trails and how to finance open space, parks and trails
- Wildlife Corridor Linkages
- Consider adjacent land uses to transport corridors so no ‘sound walls’
- Encourage economic sustainability for areas that compliments open space objectives
- Current economy reliant on mining – Potential for lands offsets to planned mining impacts

4. From the success stories, you heard earlier today from the panel, what implementation tools would you like to explore further/learn more about for your open space interests.

- State Trust Land and BLM need a better expedited method to acquire for Open Space

- Education needed to remedy conflicts between developments, municipalities and trail systems
- Tools of Habitat conservation plans – for Pinal County and Arizona State Trust Land
- Education for residents about the need for Open space and build local support
- Make presentations to Pinal County Board of Supervisors regularly (every 2-3 month)
- Need Method to construct regional trail system i.e. under or near transmission lines, CAP, etc.
- Long term management funding
- OHV's – Do we need to establish parks for them?
- Get user groups to maintain the open spaces

5. What can you contribute to the establishment of open space in Pinal County? Would you be interested in continuing to work on open space implementation in Pinal County by attending subsequent workshops? Would you or your organization be willing to explore partnerships/collaborations possibilities with Pinal County, beyond this workshop, to reach shared open space goals?

- More members come to public hearings
- Attend meetings on forest and/or State Trust Land and BLM
- Events for Eastern part of Pinal County to celebrate values and publicize county wide multiple events one or two times per month
- Create a coalition for Pinal County Open Space
- Consistent leadership

6. Are you aware of other individuals or groups who are proponents of open space in Pinal County who are not present at this workshop today but may like to participate in subsequent workshops/meetings?

- County Supervisors
- Flood Control District
- Indian Communities