

Open Space and Trails

Department Update

Pinal Partnership OS&T Committee

November 2021

Current Amenities

- 4 Neighborhood Parks-180 acres
 - Added two parks park (8+ acres) since 2013
- 65 miles of Regional Trails
 - Added 10.5 miles since 2013
- 7 Trailheads
 - Added one trailhead since 2013
- 2 park sites leased for community gardens
- 1 leased equestrian facility
- Manage contract with Fairgrounds Non Profit

Current Improvement Projects

- Arizona National Scenic Trail
 - Steel signage
 - Rainwater collector
- Dinosaur Park
 - Safety improvements
 - Replaced worn poly fall zone material
 - Removed sand fall zone material and replaced with engineered wood fiber
 - Replaced worn, damaged playground structure parts
- Dudleyville Park
 - ADA improvements
 - Parking improvements
 - New sidewalks and basketball court repairs



Current Improvement Projects

- San Manuel Park
 - ADA improvements
 - New Basketball court
 - New Playground structure with shade structure
 - Ramada and group picnic area
- West Pinal Park
 - New online camping reservation system
 - Repainted all block BBQ grills







Sign In



Search, discover, book.
Create camping memories that last a lifetime.

Dates

Check In → Check Out

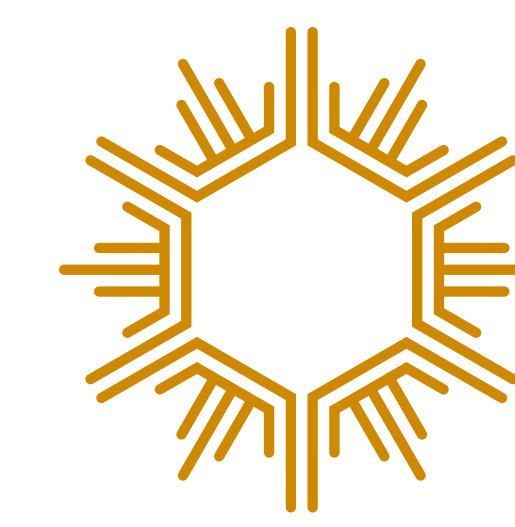
Guests

2 Adults ▼

Search

Current Master Plan Projects

- Peralta Regional Park
 - 500 acres,
 - Overnight camping,
 - Family and individual picnicking,
 - Multi use non-motorized trails,
 - Star gazing
 - Estimated opening-late 2022

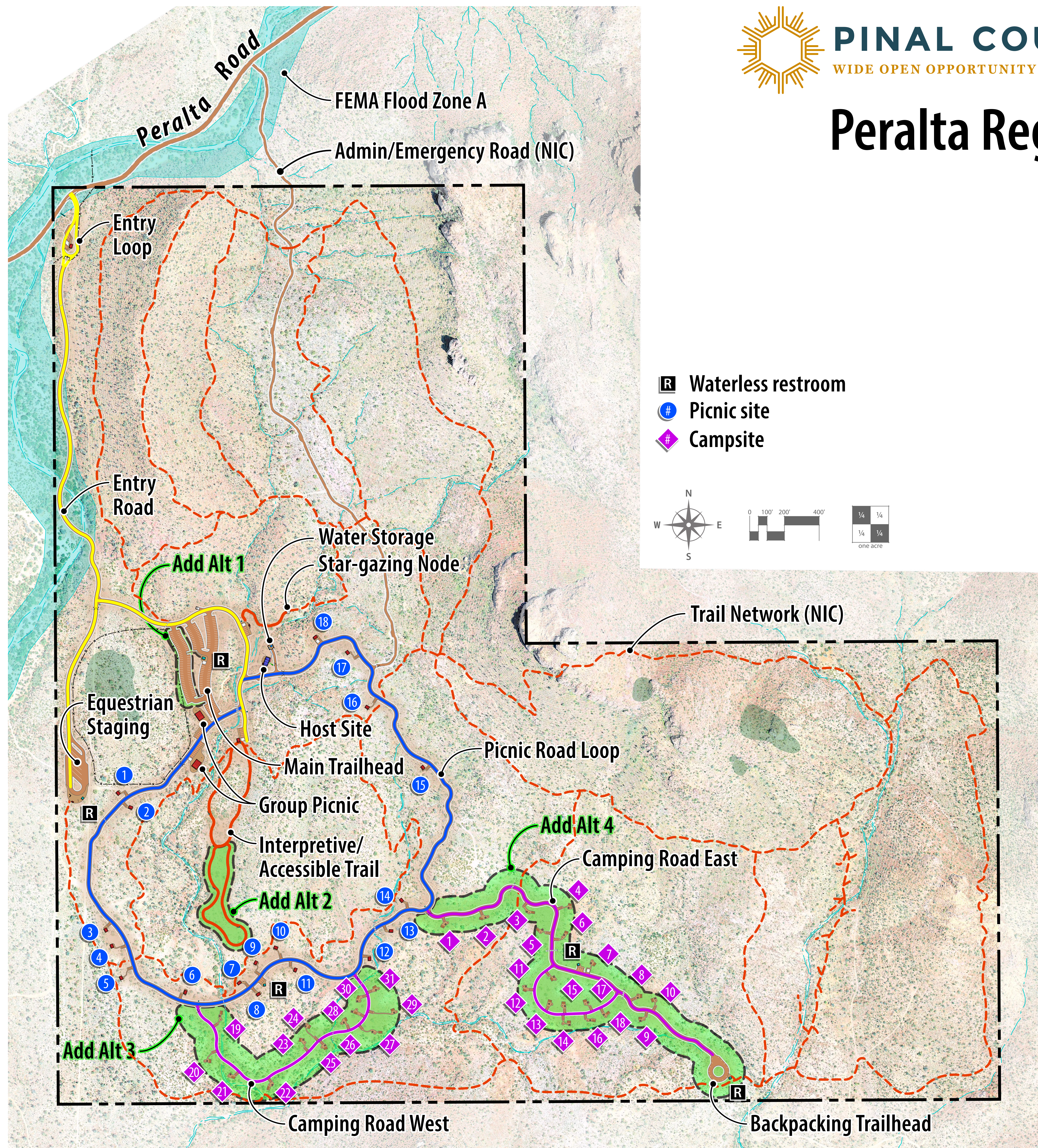


PINAL COUNTY

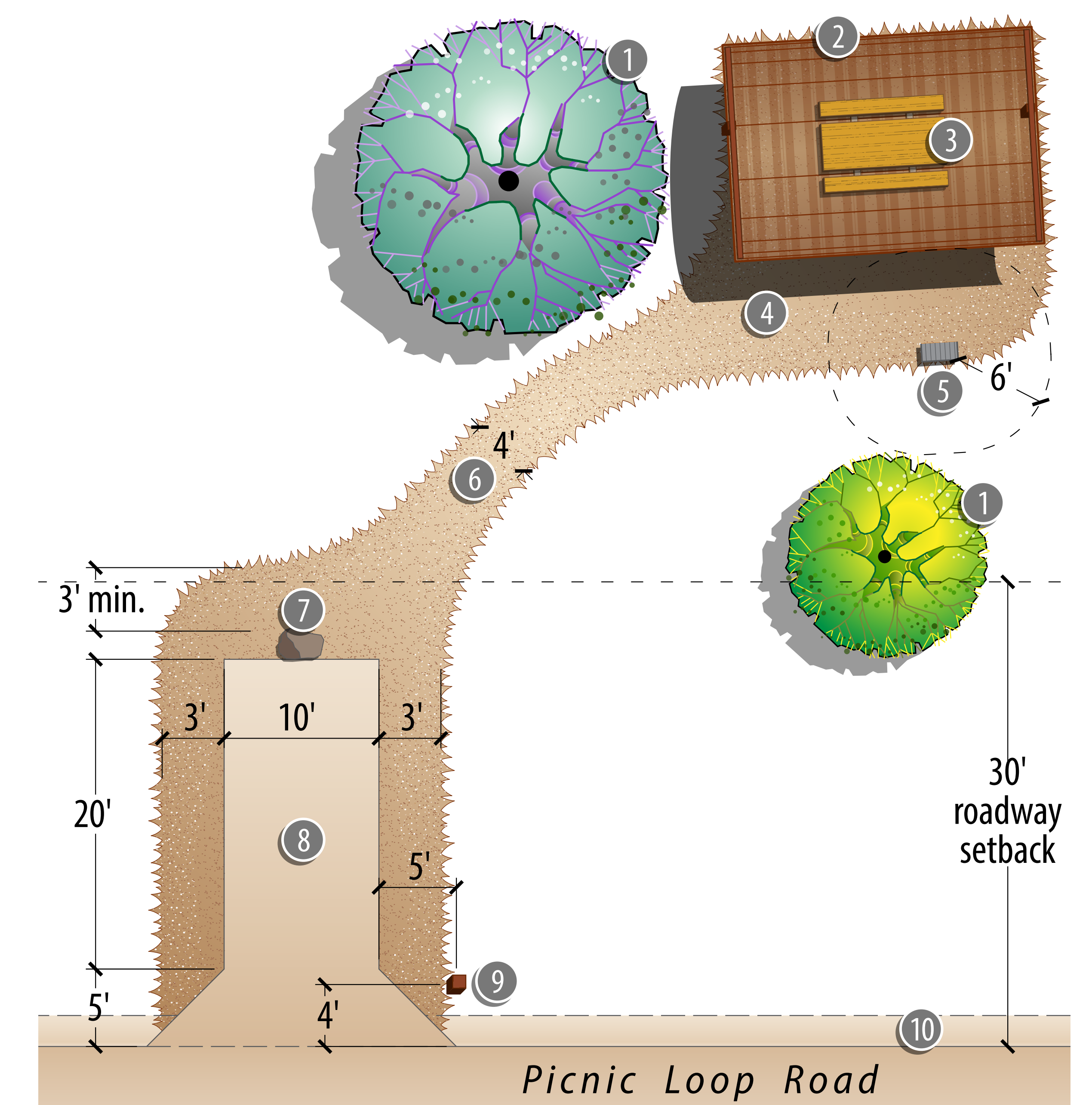
WIDE OPEN OPPORTUNITY

Peralta Regional Park Master Plan

October 2021



Typical Picnic Site



- 1 Arrange picnic site to avoid specimen desert vegetation
- 2 Picnic ramada, orient to prominent view
- 3 Level pad under ramada with picnic table centered
- 4 Rolled DG
- 5 Single pedestal grill with 6' clear zone
- 6 Connecting path, where occurs (length varies)
- 7 Boulder wheel stop
- 8 Graded roadbed parking stall
- 9 Picnic site marker
- 10 Road shoulder

Current Master Plan Projects

- CAP National Recreation Trail (Phase 2)
 - 40 Miles (Park Link Dr to Town of Florence)
 - Two trailheads and one access node
 - Estimated opening-mid to late 2023 (depending on funding)
 - Miles remaining 40+/-

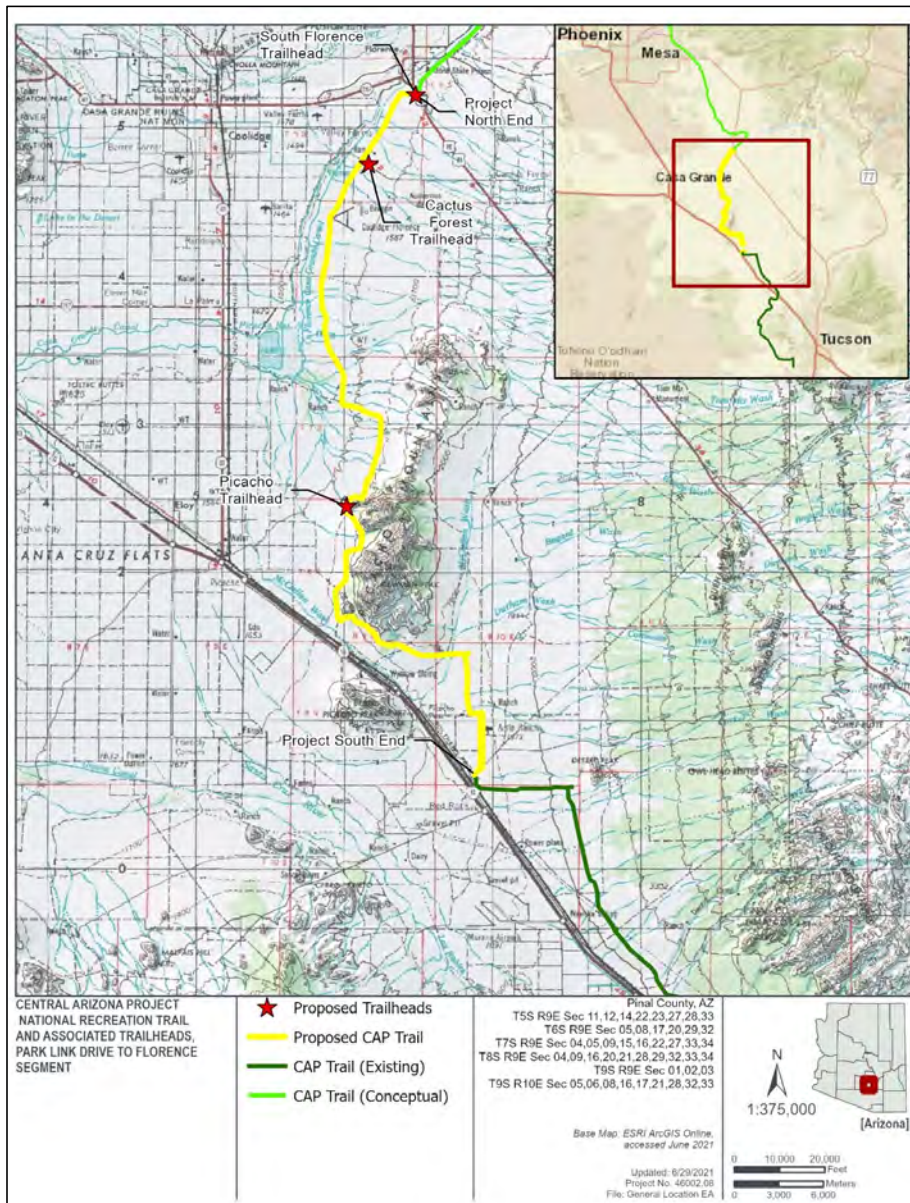


Figure 1. Project Location

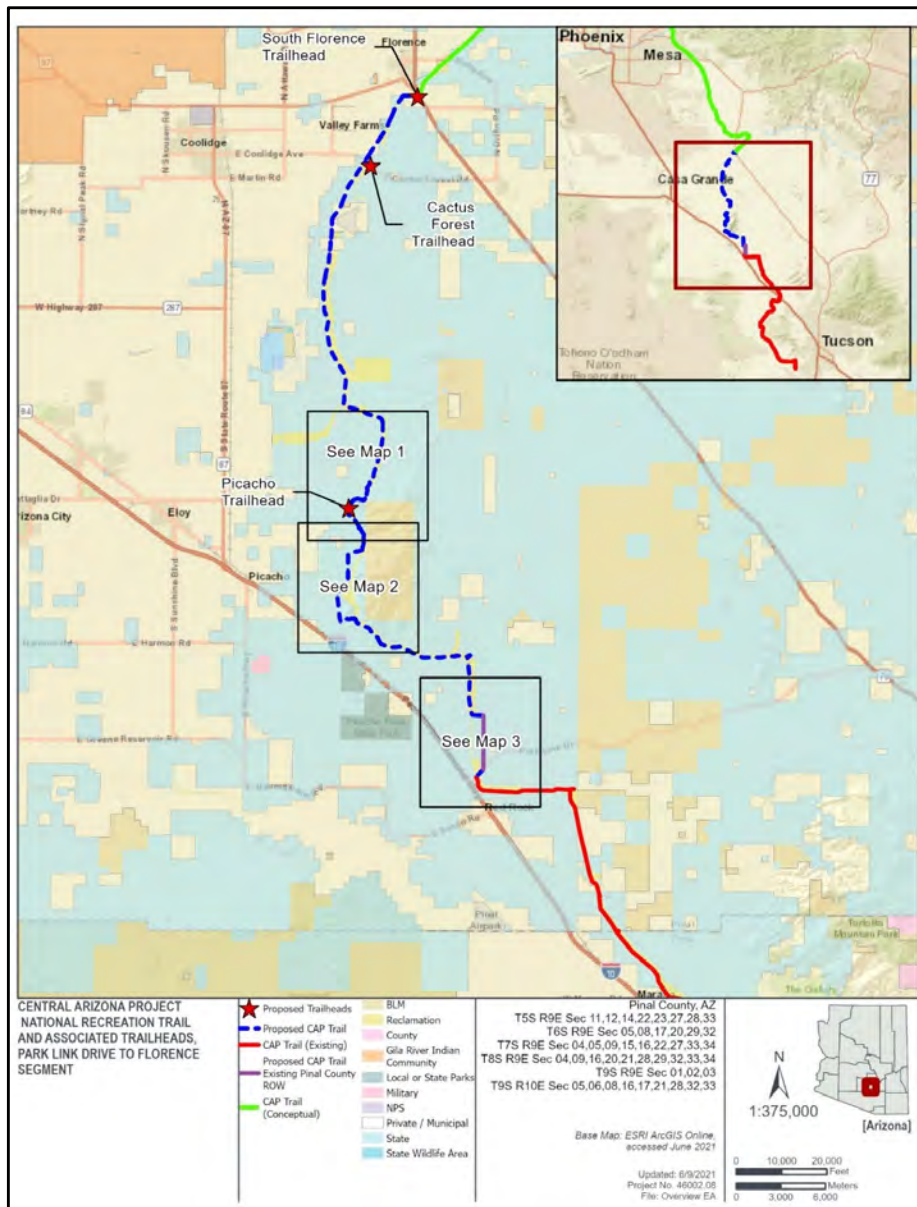


Figure 2. Project Overview

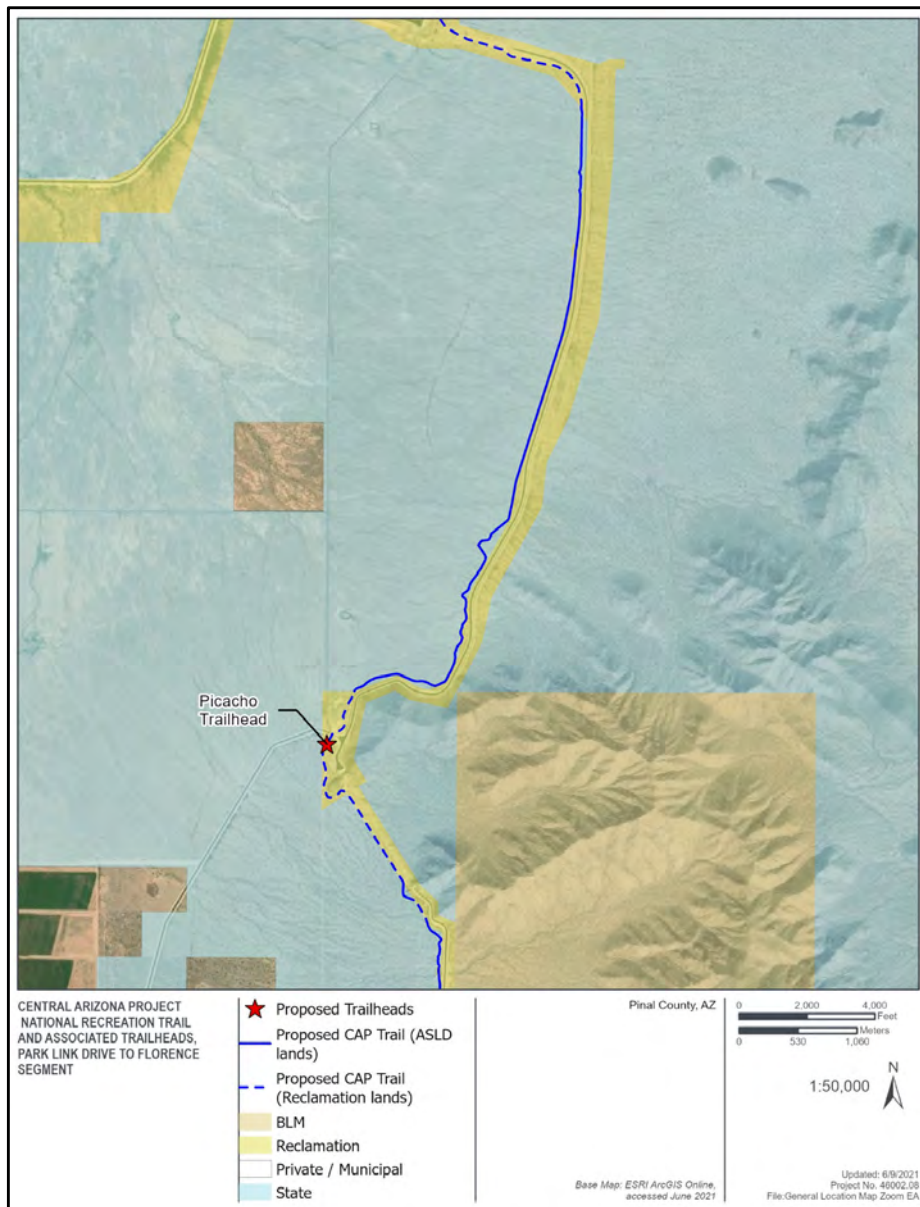


Figure 3. Project Overview (Inset 1 from Figure 2)

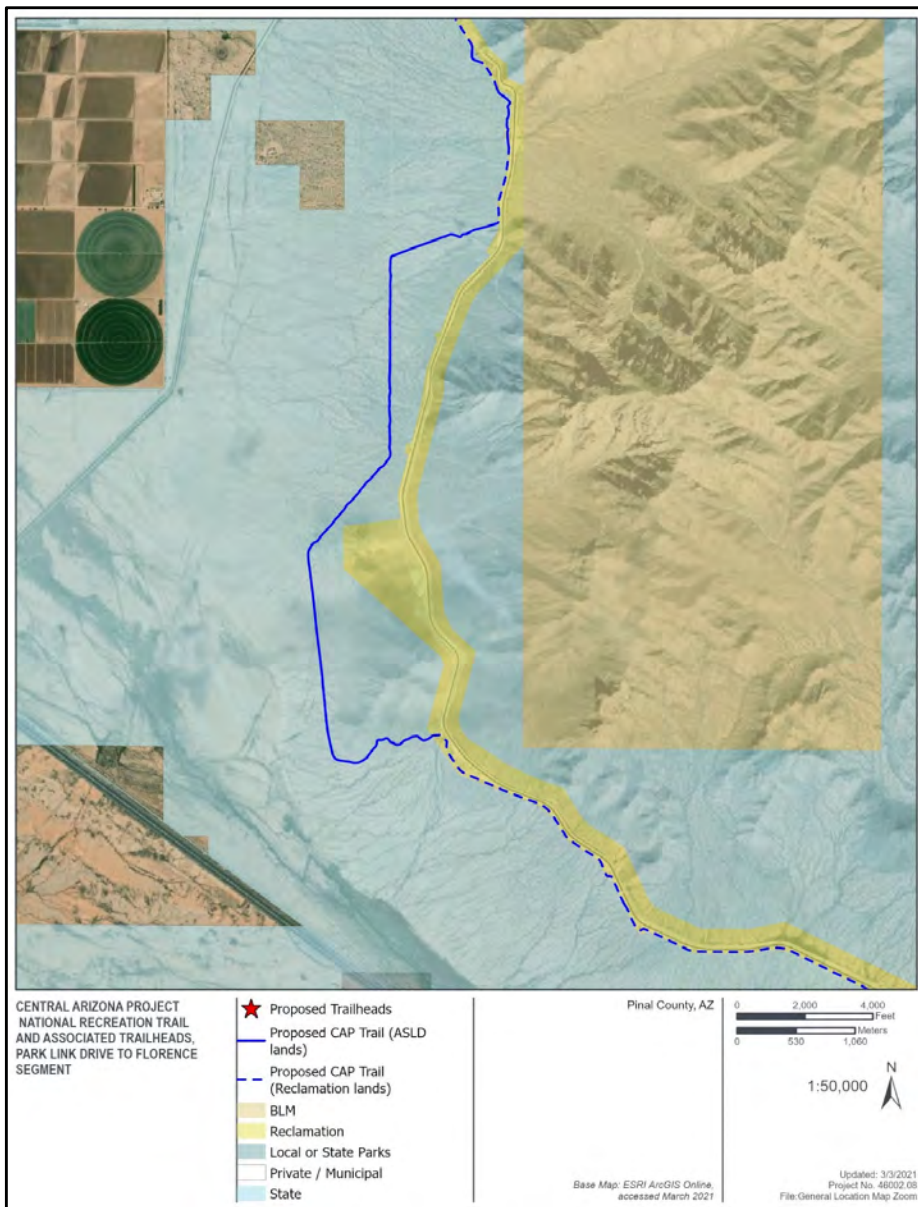


Figure 4. Project Overview (Inset 2 from Figure 2)

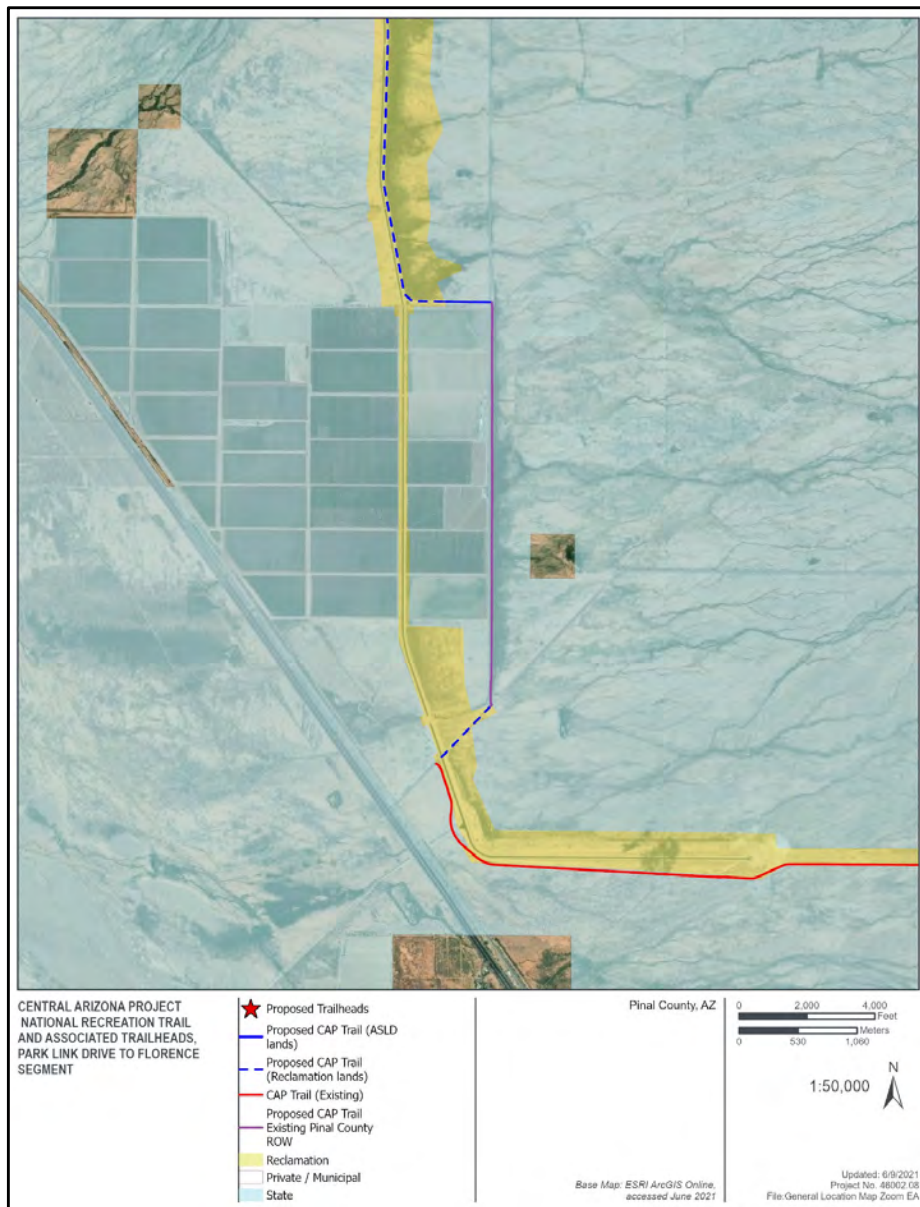
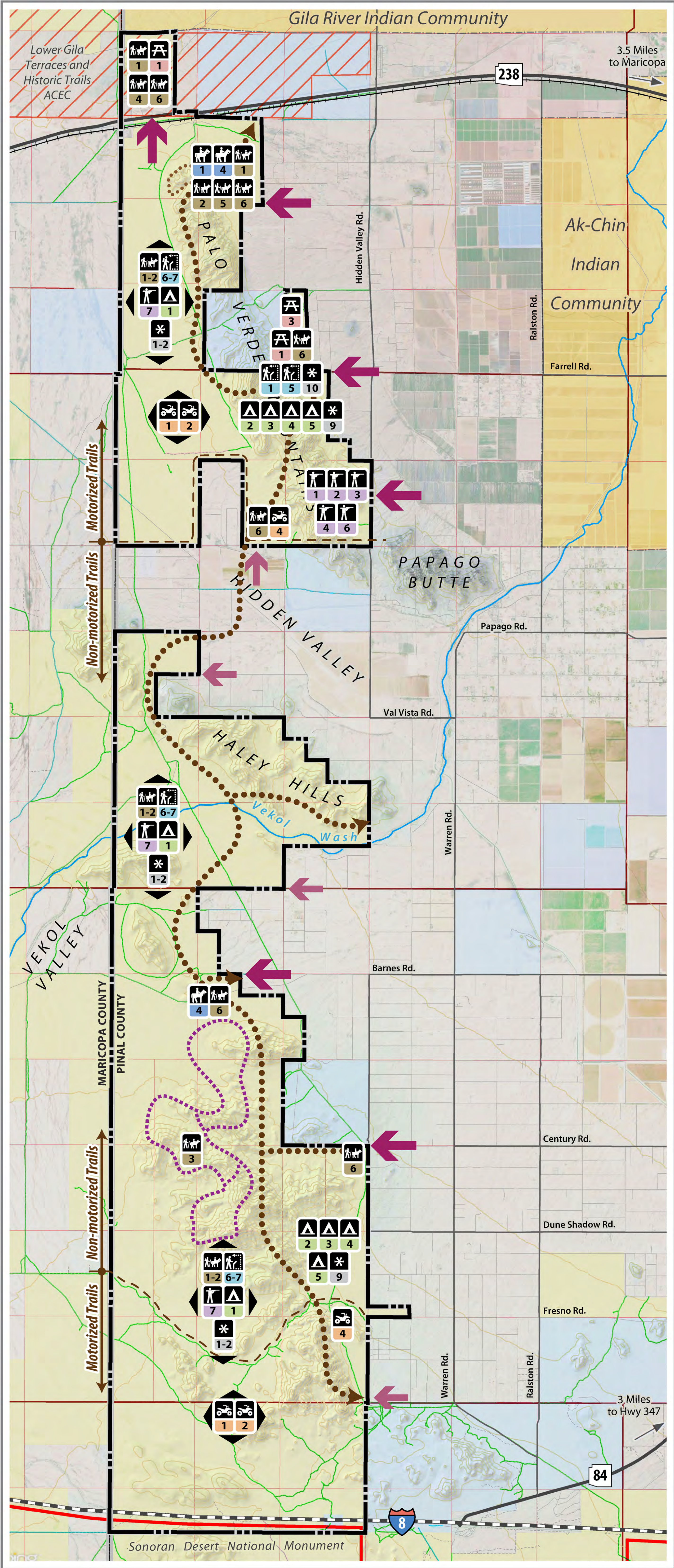


Figure 5. Project Overview (Inset 3 from Figure 2)

Current Master Plan Projects

- Palo Verde Regional Park (Phase one)
 - 3 Activity/access areas,
 - Main entry complex-non motorized trailhead, campground, archery range
 - One non motorized trailhead,
 - One motorized trailhead,
 - 20+ miles of non motorized trails
 - Estimated opening-phased TBD
 - 2 BLM process need to be completed before R&PP lease is issued.
 - NORA(Notice of Realty Action)
 - EA (Environmental Assessment)
- BLM Box Canyon Shooting Facility



Palo Verde Regional Park

Preferred Alternative











PINAL COUNTY
wide open opportunity

Reference Features

- Proposed Park Boundary
- BLM Tertiary Unpaved Road (These are the only BLM-authorized two-track roads)
- National Monument Boundary
- Area of Critical Environmental Concern (ACEC)
- State Trust Land
- Bureau of Land Management
- Pinal County Conceptual Trail Alignment
- Existing Secondary Trail
- Proposed Competitive Track Area

Proposed Recreation

	Facility/Activity	Complies with County Policy	Consider for Master Plan	Preferred Alternative
	Trail (Non-motorized for Hiking/Running, Biking, and Equestrian)			
	1 Secondary Trails (2' Tread)	Yes	Yes	Yes
	2 Primary Trails (4' Tread)	Yes	Yes	Yes
	3 Competitive Tracks (Running, Biking, Equestrian)	Yes	Yes	Yes
	4 Interpretive Trails	Yes	Yes	Yes
	5 Barrier-Free Trails	Yes	Yes	Yes
	6 Trailhead Facility (Parking, Comfort Station)	Yes	Yes	Yes
	Trails (Motorized)			
	1 Single Track (Motorcycle)	Yes	Yes	♦
	2 Two Track (Off-highway Vehicle)	Yes	Yes	♦
	3 Jeep Tour	Yes	No	No
	4 Staging Area	Yes	Yes	Yes
	5 Passenger Car Loop	Yes	No	No
	Equestrian			
	1 Riding Stable (Equestrian Stalling, Non-Concessionaire)	*	Yes	Yes
	2 Arena	*	Yes	No
	3 Backcountry Water	Yes	Yes	○
	4 Staging Area	*	Yes	Yes
	Interpretive			
	1 Interpretive Center	Yes	Yes	Yes
	2 Nature Center	Yes	Yes	No
	3 Museum/Cultural Center	Yes	Yes	No
	4 Botanical Garden	Yes	No	No
	5 Amphitheater (Small, up to 100 People)	Yes	Yes	Yes
	6 Wildlife Viewing/Bird Watching	Yes	Yes	Yes
	7 Photography	Yes	Yes	Yes
	Picnic Area			
	1 Family Area	Yes	Yes	Yes
	2 Large Group	Yes	Yes	No
	3 Playground	Yes	Yes	Yes
	Camping			
	1 Backcountry	Yes	Yes	Yes
	2 Tent Site	Yes	Yes	Yes
	3 RV/Trailer Camping (Unimproved)	Yes	Yes	Yes
	4 RV/Trailer Site (Electric, Water)	Yes	Yes	Yes
	5 Group Site	Yes	Yes	Yes
	Shooting Sports			
	1 Shooting Range (Pistol & Rifle)	*	Yes	Yes
	2 Shotgun (Skeet/Trap/Sporting Clays)	*	Yes	Yes
	3 Archery Range	*	Yes	Yes
	4 Archery Field Course	*	Yes	Yes
	5 Paintball Field	*	Yes	No
	6 Shooting Sports Concession	*	Yes	Yes
	7 Hunting, Backcountry	*	Yes	Yes
	Miscellaneous			
	1 Geocaching	*	Yes	Yes
	2 Rock Climbing	*	Yes	Yes
	3 Challenge Course (Ropes Course)	*	Yes	No
	4 Zip Line	*	Yes	No
	5 BMX Bike Course	*	Yes	No
	6 BMX Bike Pump Track	*	Yes	No
	7 RC Aircraft Field	*	Yes	No
	8 Large Event Area (Outdoor Theater Performance/Large Amphitheater)	Yes	No	No
	9 Off-Leash Dog Area	Yes	Yes	Yes
	10 Disc Golf	Yes	Yes	Yes

* With provisions

♦ On authorized trails only

○ Backcountry water sources already exist within the park

- Dispersed Activity Throughout
- Proposed Park Access, Primary
- Proposed Park Access, Secondary

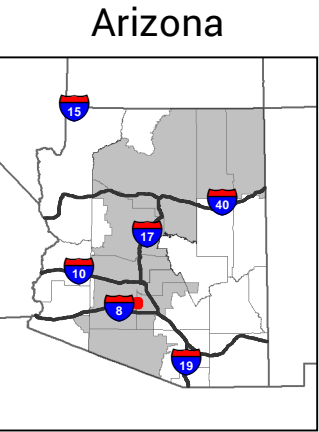
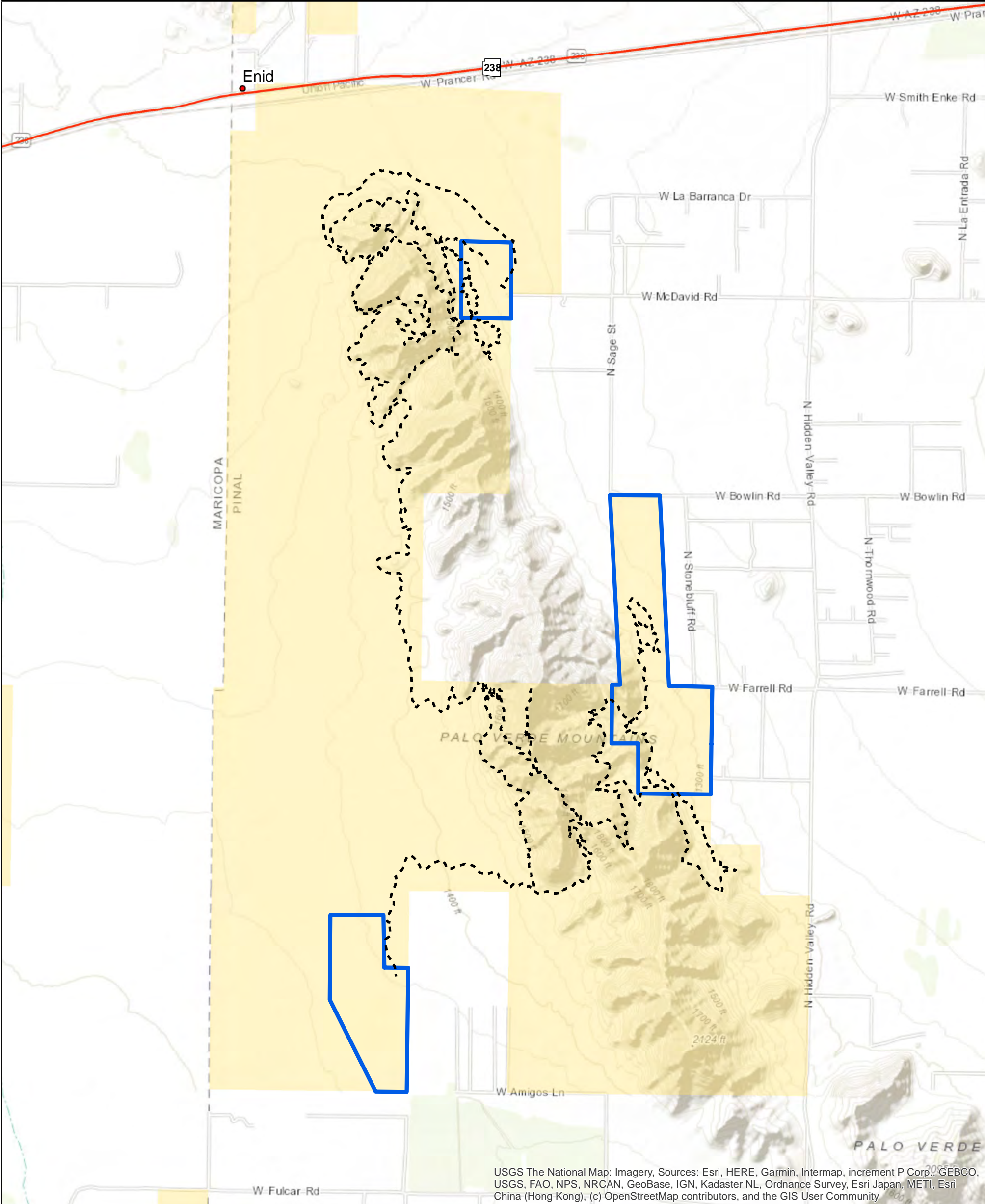
Locations are general.

Secondary access points may range from non-fee entry points with no additional facilities to developed fee-based day-use trailheads.



0 0.5 1.0 2.0
Miles

December 2016



Map Location

No warranty is made by the Bureau of Land Management as to the accuracy, reliability, or completeness of these data for individual use or aggregate use with other data. Decisions in this document only apply to BLM lands.

Palo Verde Recreation & Public Purposes Act Lease Project

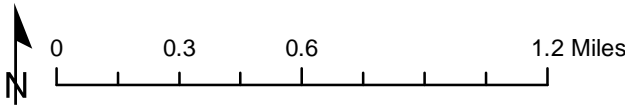
UNITED STATES DEPARTMENT OF THE INTERIOR
BUREAU OF LAND MANAGEMENT



Date: 2/10/2021
MAP PREPARED BY
B. Buttazoni
ON February 10, 2021



1:29,742



- Proposed Trail System
- R&PP Parcel Boundaries
- Bureau of Land Management

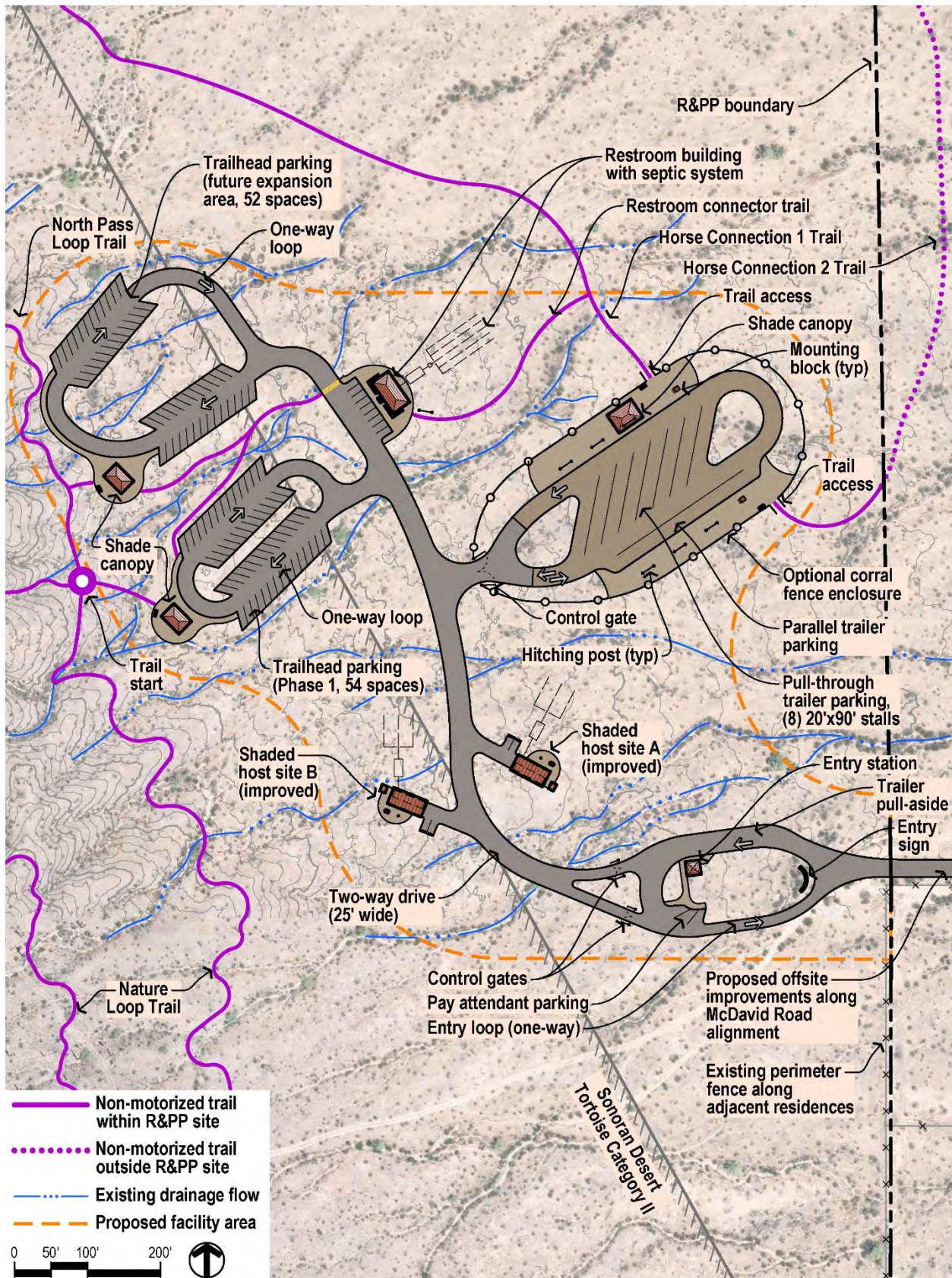


Figure 2. McDavid Road Trailhead and Staging Area

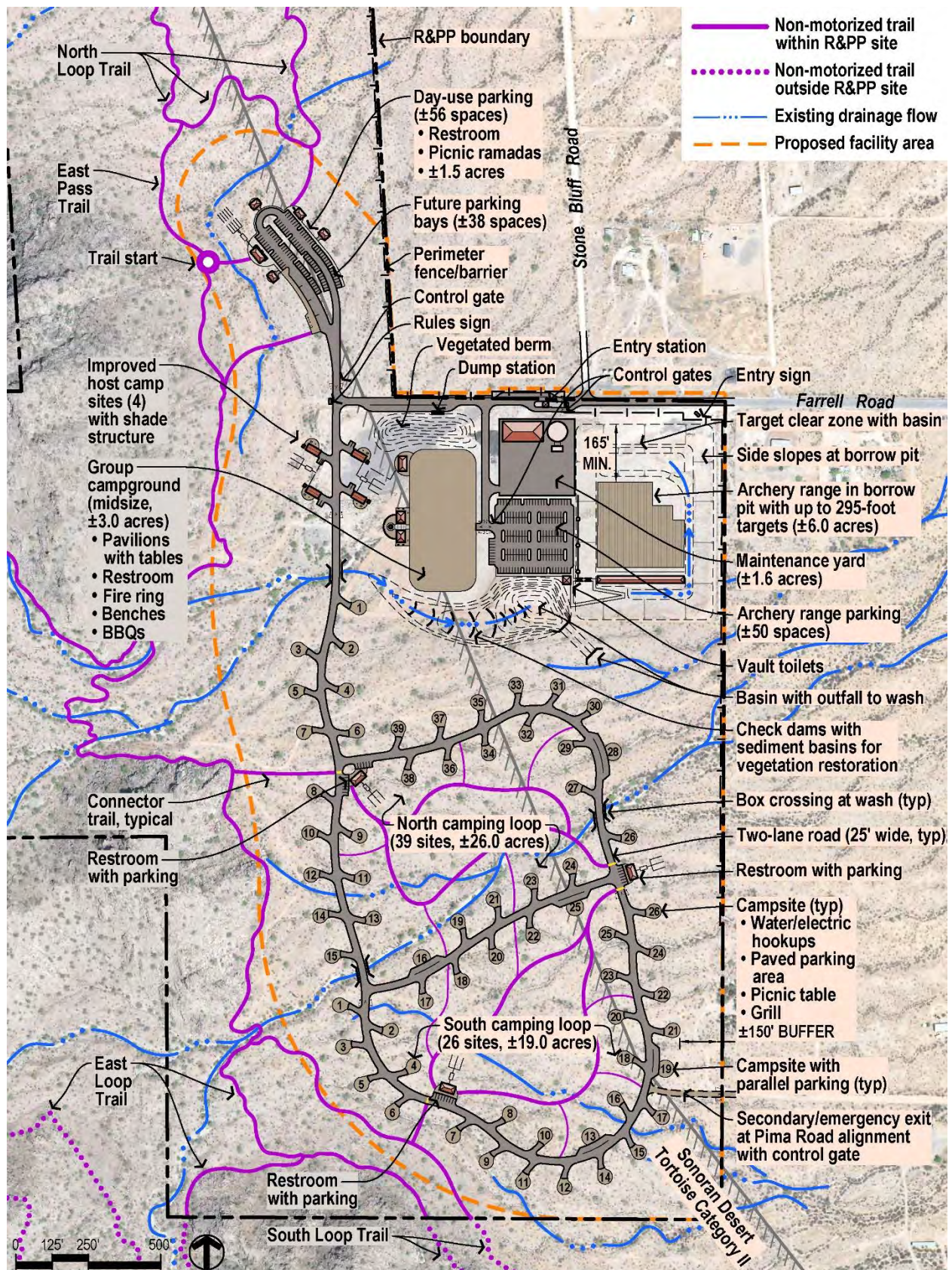


Figure 8. Farrell Road Trailhead and Campground

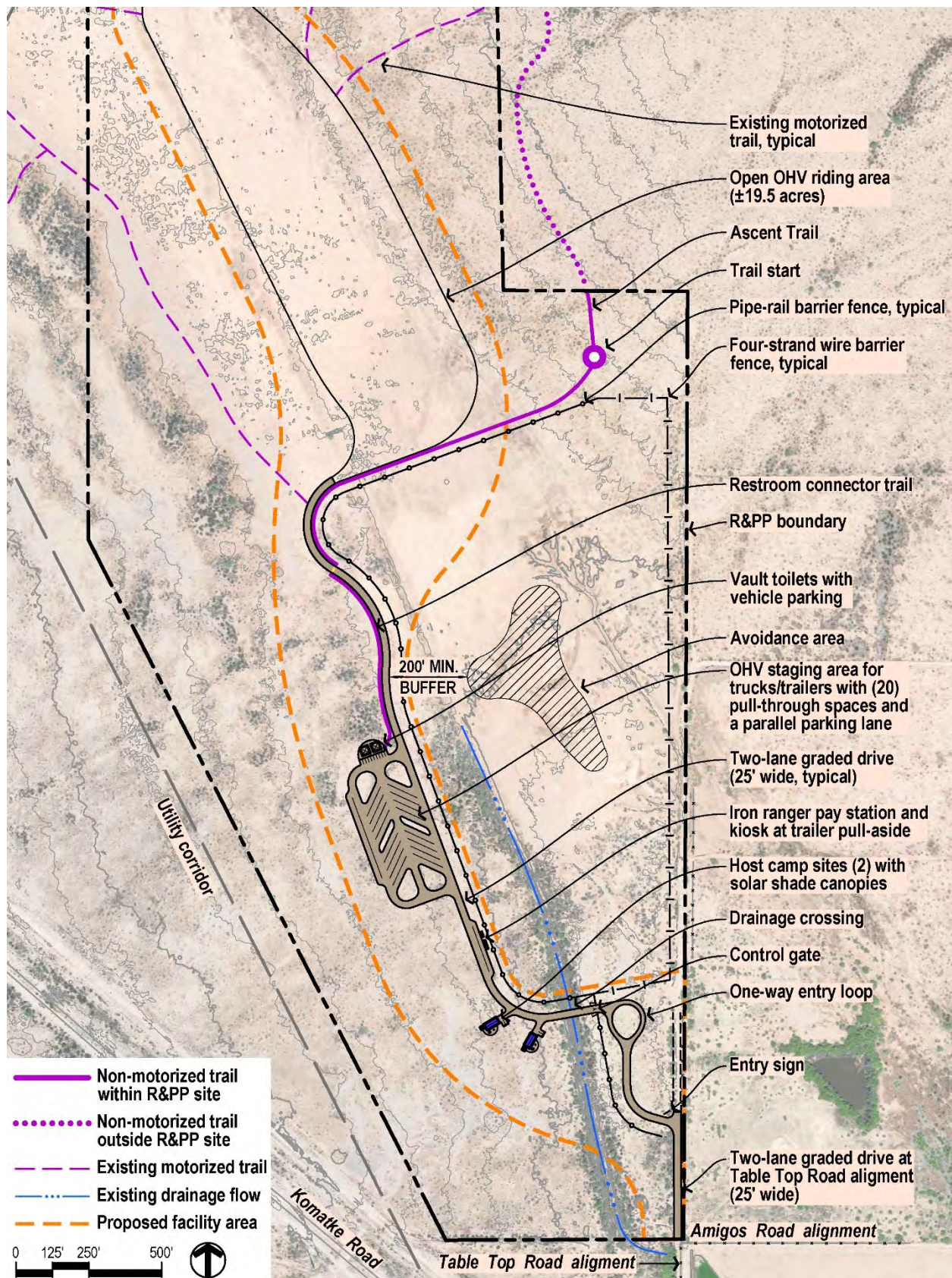


Figure 14. Table Top Road OHV Area

Current Master Plan Projects

- San Pedro River
 - Lower San Pedro Collaborative
 - AZGFD Lower San Pedro Wildlife Area
 - Pinal Birding Trail
- San Tan Mountain Regional Park
 - On and off discussion with Maricopa County regarding future Pinal County involvement in management/operations/ownership of this facility.
- Tortolita Mountain Park
 - Multi jurisdictional discussions regarding shared management opportunities. Effort on hold.
 - Collaborative management offer to Arizona State Land Department related to unauthorized trail network, no official response.
 - Preliminary trail planning has been completed in some areas.

Outdoor Recreation and COVID

- Increased interest in outdoor recreation
 - Park use
 - Overnight stays
 - Trail use
- Partnerships and collaboration
 - Network for AZ Trails
 - Recreation Responsibly
 - Trails are Common Ground



Ways to #RecreateResponsibly outside:

- 1 KNOW BEFORE YOU GO**
Check the status of the place you want to visit for closures, fire restrictions, and weather.
- 2 PLAN AND PREPARE**
Reservations and permits may be required. Make sure you have the gear you need, and a back-up plan.
- 3 BUILD AN INCLUSIVE OUTDOORS**
Be an active part of making the outdoors safe and welcoming for all identities and abilities.
- 4 RESPECT OTHERS**
There is space for everyone and countless outdoor activities. Be kind to all who use the outdoors and nature differently.
- 5 LEAVE NO TRACE**
Respect the land, water, wildlife and Native communities. Follow the seven Leave No Trace principles.
- 6 MAKE IT BETTER**
We all have a responsibility to sustain the places we love. Volunteer, donate & advocate for the outdoors.

Join the movement
RecreateResponsibly.org



Pinal County Birding Trail

- History
 - Charles Hofer and Craig Anderson
 - <https://parks-trails.pinal.gov/apps/the-pinal-county-birding-trail/explore>
- Arizona Birding Trail
 - arizonabirdingtrail@gmail.com
 - New website, first draft in process
 - Working on site collection information
 - Looking to secure funding